An aerial photograph of Kalei'opu'u Elementary school and its surrounding neighborhood. The school is a large, modern building with a grey roof and blue accents, situated in the upper left. To its left is a green sports field with white yard lines. The foreground features a large, paved parking lot with several cars parked. To the right of the school is a residential area with houses of various sizes and colors. The background is filled with lush green trees and more houses. The text "Kalei'opu'u Elementary" is written in a black serif font across the top. Below it, "Annual Title 1" and "Parent Meeting" are written in a large, bold, black serif font with a white outline, spanning across the middle of the image.

# Kalei'opu'u Elementary Annual Title 1 Parent Meeting

Open House  
July 31, 2025  
5:00 pm



# What is TITLE 1?



Title I, Part A is the largest **federal aid program** for public and private schools in the United States, established under the **Elementary and Secondary Education Act (ESEA) of 1965**, and most recently reauthorized by the **Every Student Succeeds Act (ESSA) of 2015**.

# TITLE 1's Core Purpose

## **Equity in Education:**

Title I fundamentally aims to promote **fairness** and **equal opportunity** in schooling.



# TITLE 1's Core Purpose

## **Equity in Education:**

Title I fundamentally aims to promote **fairness** and **equal opportunity** in schooling.

## **Supplemental Financial Aid:**

Provides extra **funding** to schools with a high concentration of low-income students.



# TITLE 1's Core Purpose

## **Equity in Education:**

Title I fundamentally aims to promote **fairness** and **equal opportunity** in schooling.

## **Supplemental Financial Aid:**

Provides extra **funding** to schools with a high concentration of low-income students.

## **Primary Goal:**

To ensure **all** children have access to a fair, equitable, and high-quality education.



# TITLE 1's Core Purpose

## **Equity in Education:**

Title I fundamentally aims to promote **fairness** and **equal opportunity** in schooling.

## **Supplemental Financial Aid:**

Provides extra **funding** to schools with a high concentration of low-income students.

## **Primary Goal:**

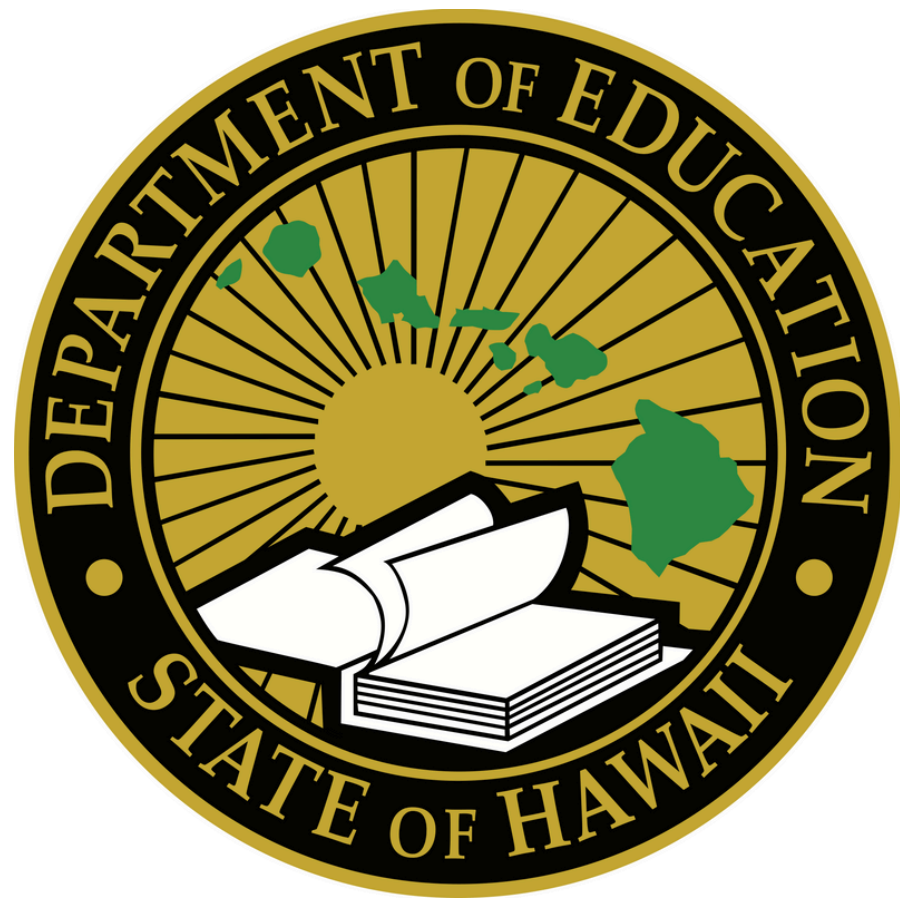
To ensure **all** children have access to a fair, equitable, and high-quality education.

## **Achievement Gap Closure:**

A key objective is to help **bridge the educational disparities** between disadvantaged students and their peers.



# Title 1 Eligibility



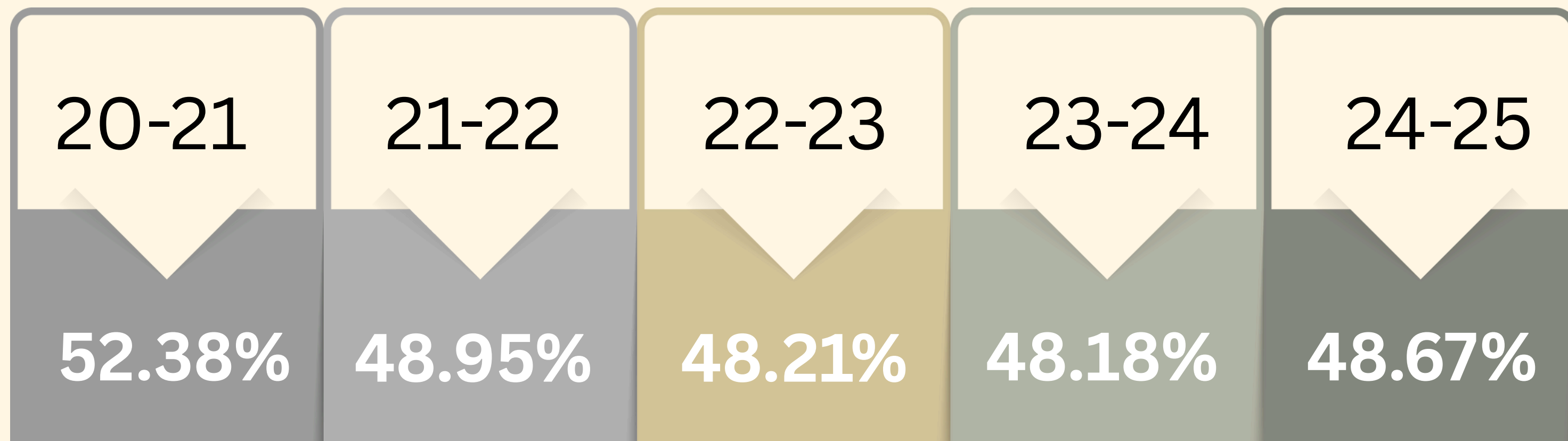
Hawaii Department of Education (HIDOE) Title I eligibility is based on a minimum poverty threshold of **47.2%**, which is determined by the percentage of students qualifying for free and reduced-priced meals.





# We are a Title 1 School

Percent of students who qualify for free or reduced-priced meals at Kalei'opu'u Elementary each year. Eligibility threshold: 47.2%



DOE uses the previous school year's data to determine if a school will qualify for the following school year.





# **Title 1 Requirements**

## **Comprehensive Needs Assessment (CNA)**

A CNA must be conducted at each Title I school to gain a better understanding of the strengths and the contributing/root causes of the identified needs.





# Title 1 Requirements

## Academic Plan

Title I Schoolwide Plan (Academic Plan) must be written, implemented, and monitored by each school. It explains how the school will boost academic achievement by addressing the root causes of needs identified in the school's CNA.





# Title 1 Requirements

## Title 1 Fiscal Form (TFF)

The school's Title I budget plan,  
must be aligned with the school's CNA  
and the Title I Schoolwide Plan (AcPlan).





# Title 1 Requirements

## Parent and Family Engagement

Activities aim to improve student academic achievement and school performance.

Parent and Family Engagement is a contributing factor to student success.



# How does Kalei'opu'u use the Title 1 funds?



## TECHNOLOGY

Acquire the necessary technology to ensure that teachers and students can access online learning tools and gain computer science skills.

All students have access to their own laptop/iPad in their classrooms.



# How does Kalei'opu'u use the Title 1 funds?



## TECHNOLOGY

Acquire the necessary technology to ensure that teachers and students can access online learning tools and gain computer science skills.  
All students have access to their own laptop/iPad in their classrooms.



## PROFESSIONAL DEVELOPMENT

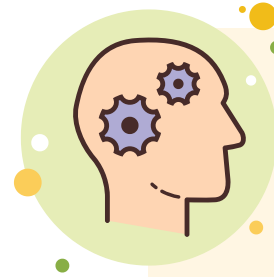
Provide teachers with professional development to gain strategies that help all learners succeed.

# How does Kalei'opu'u use the Title 1 funds?



## TECHNOLOGY

Acquire the necessary technology to ensure that teachers and students can access online learning tools and gain computer science skills.  
All students have access to their own laptop/iPad in their classrooms.



## PROFESSIONAL DEVELOPMENT

Provide teachers with professional development to gain strategies that help all learners succeed.



## CURRICULAR MATERIALS

Provide curricular supports such as online programs, supplemental materials, and classroom supplies that support teaching and learning.



# How does Kalei'opu'u use the Title 1 funds?



## TECHNOLOGY

Acquire the necessary technology to ensure that teachers and students can access online learning tools and gain computer science skills.  
All students have access to their own laptop/iPad in their classrooms.



## PROFESSIONAL DEVELOPMENT

Provide teachers with professional development to gain strategies that help all learners succeed.



## CURRICULAR MATERIALS

Provide curricular supports such as online programs, supplemental materials, and classroom supplies that support teaching and learning.



## FAMILY ENGAGEMENT

Support family engagement and strengthen the home-school connection by providing resources and supplies for activities that enhance your child's learning and well-being.



# Parent Involvement

Parents are encouraged to stay involved in their child's learning as it is a success factor for all students.

## Here are some ways:

- Attend parent teacher conferences
- Join Class Dojo (school and classroom) to receive announcements
- Check your child's planner daily
- Attend school and grade level family engagement events during the school year
- Join the Friends of Kalei'opu'u PTO and volunteer at school events





# How to help KES qualify for Title 1

WE ENCOURAGE  
**ALL** FAMILIES  
TO APPLY

Each application  
will help!!

SCAN



# Stay Connected

Join your child's  
classroom  
Class Dojo  
to stay connected  
to the  
classroom and school.

**\*ONLY Parents and Legal Guardians may join the Classroom  
and School Class Dojo accounts for security reasons**





# MAHALO!



Proud to be a  
Title I School



If you have any questions,  
please contact the school at:  
(808) 307-7000